

3G/4G HD Solar Cam

Tel 1300 763235



3G/4G HD 2 Megapixel Motion Activated & Time Lapse Solar Security Camera

Live view this Solar powered megapixel camera from any web enabled device including PC, Mac, Ipad, Iphone etc. No software or Apps needed. Secure user name and password login worldwide. You don't have power, you don't have internet, cabling is out of the question! It really doesn't matter.

Our **3G/4G or WiFi** enabled HD Solar Camera can be mounted anywhere, provided there is at least some mobile phone signal. If you're mobile phone has cell phone reception at the camera location, our Solar Cam will function and we can boost cellular reception if needed.

Motion activated or time lapse, the recorded images are saved to our secure SSL servers (similar to Cloud) meaning no matter where you are, there is always up to the second remote monitoring access including various alarm notifications, email or text alerts. Pole mount the camera and solar panel, aim and switch it on. Nothing more to do and very cost effective. Easy to move from one location to another and no professional installation required. **Call our office to see an online test camera demonstration.**

3G HD Solar Cam is available in a range of mounting options including this latest release featured below. Note the solar panel, and totally optional LED Flood light and audio speaker.

HD Live Solar Security

Features you want at a price you won't believe

NEW!

Fantastic Quality

Advanced cross platform interface

A complete remote, HD solar system.

It might sound too good to be true, but our revolutionary system comes at an unbelievably great price. Specturs' advanced features include: Full Live Remote Viewing: High Definition Images: Advanced Motion Alarms: Spoken Warnings: Full Remote Control: Cloud Storage: Time Lapse.



Live View in HD from any web enabled device

From wherever you are, in real time use our advanced computer or smartphone interface to access and control your cameras. We use 3G networks to bring you live action.



Advanced Motion Detection Alarms

Our motion detection algorithms are so advanced that they can tell the difference between moving vehicles and moving shadows. They can tell the difference between a cat, and a cat burglar. Alarms are sent to you via e-mail in seconds and stored to our cloud server.



Everything You Need Is Included

The system comes in a powder coated, waterproof enclosure, with a sunshield and tough, high visibility window. Also included is a 20w solar panel, 50w LED light, battery and regulator. Our revolutionary camera system has 3G built in. It just needs to be mounted and turned on.

Call us now

Our technology is tried, tested and proven with 100,000's of camera hours in the toughest installations.
Australian technology for Australian conditions.

How does it work?

If you need a live view and/or motion activated remote recording HD security camera and standard CCTV cameras are not an option due to cost, labour intensive, power is too far away or not available, no Internet, running cables is out of the question, then Spectur-Solar Cam is the ultimate security camera solution.

We have taken Solar Security technology to whole new level. **3G/4G HD Solar Cam** is simply outstanding and no other solar security system can compare. A pre paid 3G/4G Data SIM card with 1-2 GB of Data is all you need. We can supply the SIM or you are most welcome to supply your own. If you have WiFi available onsite, even better as NO SIM is then required at all. Solar Cam can use either the 3G/4G Telstra network (or any other Australian or International carrier) or WiFi meaning we have you covered every which way.

Everything you need is included. Solar Cam is 100% Australian built and locally maintained so we are ready to assist with any technical questions and/or remote setup at any time. Supplied within a powder coated weatherproof enclosure (as pictured above) with sunshield and high visibility window, 40W Solar panel and solar charged 12V battery. The 50W motion activated LED Flood light and/or audio warning speaker are both optional.

Even at times of particularly poor weather, the internal battery has sufficient power to keep the camera working for at least 4 days. If you need longer battery duration, a larger capacity battery is not a problem. Even in poor weather, the solar panel will trickle feed power to the battery meaning a larger battery isn't necessary. In the unlikely event that the battery goes flat, it will auto reboot as soon as the battery begins to solar charge.

How do I remotely monitor or access the camera?

The advanced SSL secure Cross Platform interface (like a Cloud) allows for remote access via PC, Mac, Iphone and any other web enabled device. User name and password protected for authorized access only, owners are not limited to the number of users permitted to access the camera however password access can be altered remotely at any time. In fact, every feature and function of this Solar Cam can be remotely accessed WITHOUT the need to physically touch the camera.

What about Motion Detection & Time Lapse

Yes indeed! The motion detection algorithm which is so easy to use. If the camera is aimed at trees, bushes or a busy road etc, users can easily "mask" those regions thus training the camera to ignore movement in designated areas. This algorithm is so advanced it can tell the difference between a cat and a cat burglar.



By setting the desired motion detection zones, the camera will only concentrate on areas of concern. In **Scheduled Recording** mode, single or multiple users can receive motion activated alarm email or text alert messages within seconds (picture attached) with Cloud storage so nothing is ever lost.

Time Lapse recording is often preferred on Construction sites. It's therefore quite easy to set the camera to Time Lapse by day and then after hours (in scheduled recording mode) the camera will auto switch to motion detection mode with motion email alerts if desired. Ideal for farmers, water troughs, unattended machinery, fuel, gates, **Construction Sites** or any site that needs LIVE security camera remote monitoring and scheduled recording.

How does Solar Cam see in the dark?

This is where other CCTV security cameras tend to be obsolete but we have this aspect covered. Many LED Flood lights are 12V powered, same as our 3G HD Solar Camera. Consequently, when motion is detected, with a 50W floodlight interfaced to the camera, the light will illuminate for a designated period of time allowing the camera to record high-resolution quality at night and in colour. When motion ceases, the LED will switch off to conserve power. The key to our system is power conservation versus power generation.

Infra Red or IR has a number of "disadvantages" compared to LED bright lighting. IR is of no use to a colour camera because a colour camera cannot see IR. The camera needs to auto switch to B/W mode at night. IR offers a distorted on unrealistic view where a persons eyes glow or appear to be florescent, clothing and skin tone has no colour or definition and more often than not, in terms of positive identity, it can be difficult to determine whether the person is male or female. Not the best option for security.

Our 3G HD Solar Camera is available with an "optional" **LED Floodlight**, interfaced with the camera battery. These floodlights are available from 20-50W and from 60 to 120 degree angle.

It's no secret that outdoor lights (12V or 240V) can be triggered by motion as many homes & business have them already. In this instance, we have two options if night vision is needed.

1. Order the camera with an LED Floodlight as pictured
2. Order our independent 50W battery operated, motion triggered and solar powered floodlight. This option means there is no added drain on the camera battery. If the LED Floodlight is triggered it will also cause the camera to record anyway.

Provided the area under surveillance is already reasonably well lit at night, adding an LED Flood light may not be required. The end result is higher quality recording and positive ID.

12V motion activated LED Flood lighting is optional so it can always be later added if needed.

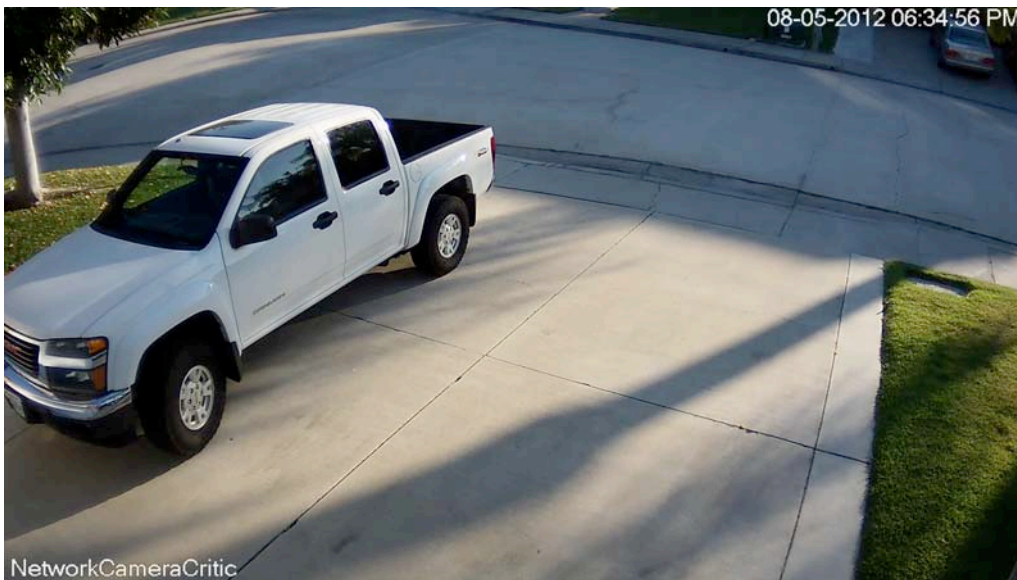
When remotely logging into your 3G Spectur Solar Security camera, if the system is fitted with an LED Flood light, it will automatically illuminate at night enabling you to see regardless of motion. When you log out the light will switch off. This is just one of many new features recently added at no extra cost.

Are there ongoing monthly or annual costs?

Think of the 3G HD Solar Camera as a mobile phone. Yes there are ongoing monthly or annual 3G Data SIM fees plus there is a small remote access Cloud fee but both are minimal and just a few dollars per week. Call for more information. We provide the camera with a 2-4GB/m Cloud server data plan, which is just a few dollars per week.

Customers may purchase their own 3G/4G data SIM card although a small annual Cloud or remote server fee will apply regardless because the dashboard service is required for both storage and monitoring. International customers must supply a local data SIM card. Our camera will function on any mobile phone network or WiFi if available. Call for more information.

Monthly/annual plans can be altered at any time to suit data usage but it's important to be aware that such plans are not exceeded to avoid additional cost, but we can monitor usage on your behalf.



How fast is the LIVE Monitoring & Recording?

Those features make this camera unique. In terms of "LIVE VIEWING" it's simply a matter of logging in (user name and password) and selecting a preferred viewing speed. Remember, some data is being used even when live viewing. The refresh rate can be anywhere from 2 frames per second to 1 frame per 10 seconds or longer. Users select low, medium or high quality all of which has a bearing on data usage so it's important not be online live streaming for extended periods if possible unless your plan is on the larger side.

The same applies to motion detection recording. Resolution can be set to low, medium or high whilst the recording speed and number of images taken during motion is adjustable to suit individual needs. For example, when the camera senses motion, you might want the camera to save 2 images before motion was detected and during the next 20 seconds, record another 10 images 2 seconds apart but that can be remotely adjusted to shorter or longer duration. The resulting playback looks video like in any event and each image can be digitally zoomed up to 14 X magnifications.

An email alert or text can be sent to you when alarm mode is active thus notifying you that motion has been detected. From your mobile phone or PC, access the server and replay the alarm alert recording or simply live view. Any evidence that need to be saved to PC hard drive is simply a matter of selecting the desired recording and pressing save.

Tell me more!

As the 3G/4G HD Solar Camera technology is becomes ever more advanced, don't worry you won't be left behind. Software and firmware changes will be available at no extra cost to all of our customers, provided that change is not hardware related. As demand for more and more features increases, our system designers and IT experts will be right there. For any technical support or assistance you only need to call or email.

The 3G/4G mobile network instantly delivers motion recordings to our Cloud servers. So when we say you "live access" the camera, we actually mean you access our cloud or secure servers to see the camera LIVE, play back recordings and remotely change settings as desired. The camera talks to our servers. Customers are NOT communicating direct with the camera as such, so it's important to understand why our Cloud servers are needed, being the brains behind every camera facet.

This camera is so smart, it can even record 3 seconds BEFORE motion was recorded. It's called pre-recording. How it works doesn't matter, just know that it does.

Can Solar Cam warn off intruders?

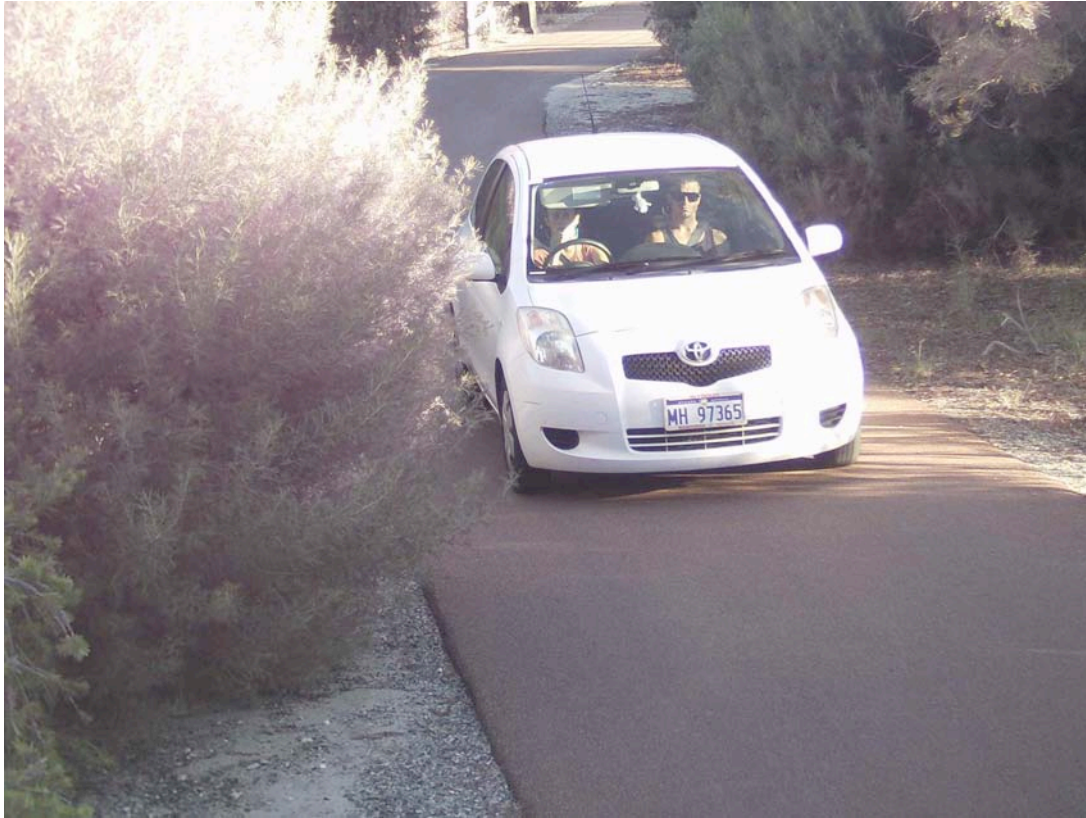
Absolutely! With the inclusion of an external speaker (see the main camera image) we can add an optional speaker to play pre recorded audio warning message with words to the effect "Police have been alerted" or "you are being recorded" or any other audio warning you choose.

Ideal for;

- Schools
- Construction Sites
- Farms
- Industrial Sites
- Car Parks
- Sheds
- Remote Sites
- Display Homes
- Unattended machinery
- Councils
- Bush Dumping
- Prohibited zones
- Fuel Bowsers
- Mine Sites



Recording Quality Examples



Outstanding quality night vision with no LED assistance other than typical street lighting!



Same camera in total darkness situation with 50W LED illumination



The images depicted in this brochure have been size reduced for demonstration purposes although it might be timely to point out the recording quality can be set to 2 Megapixel quality or higher which is much larger than depicted below. Recording in such high resolution means you have the ability to “zoom” and in detail, to identify people and and in many cases read number plates from a distance.

Mounting the camera in the correct location is fundamentally important (avoid aiming at direct sunlight) and in some cases perhaps a few cameras may be needed to cover more area or multiple zones. Customers normally supply a mounting pole otherwise the side of a building is fine. The solar panel should be mounted N/E direction at about 30 degrees.

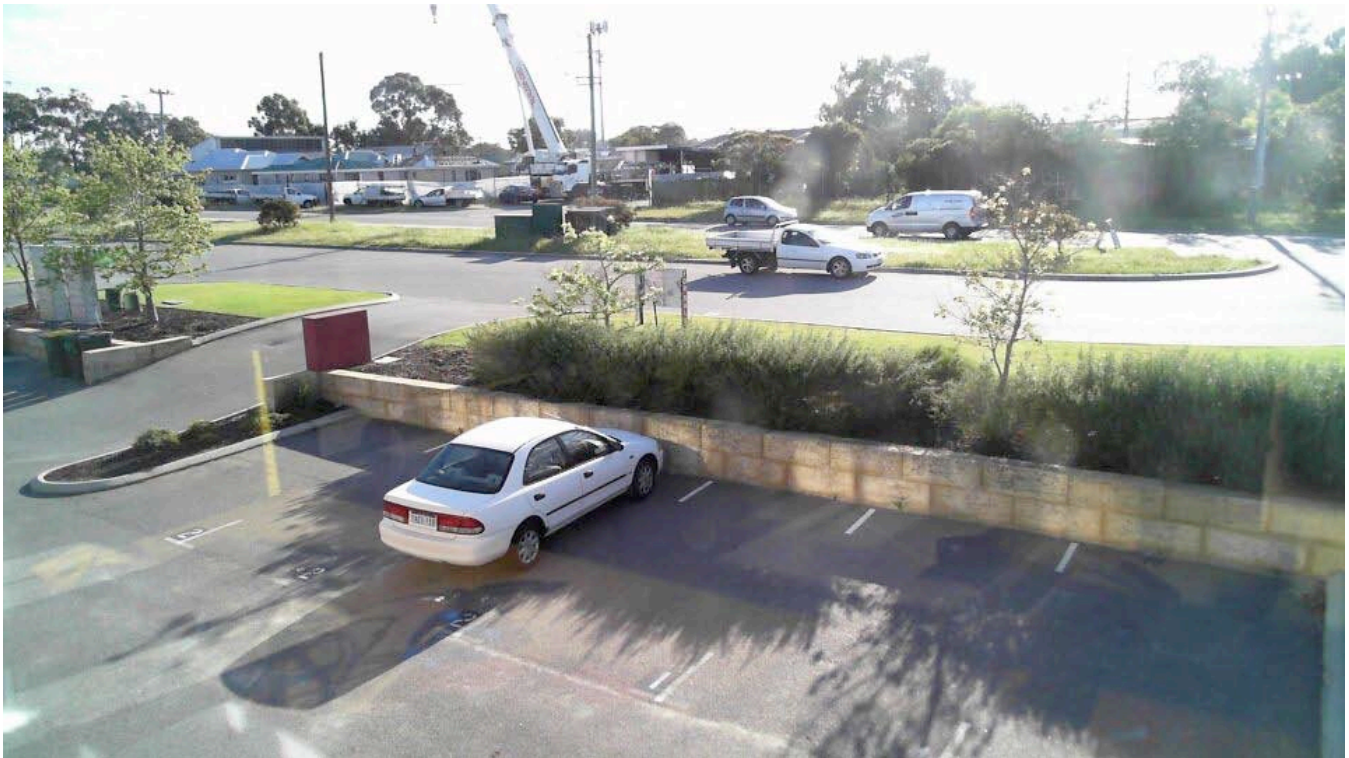
If you have a need for security cameras at various sites, could be different cities, state or country wide (even Internationally) our software allows for the user to view all cameras live at any time. The main camera will be depicted full screen whilst other cameras will be small thumbnail size although by simply touching upon the thumbnail camera, full screen viewing and playback is depicted. It's what we call **advanced cross platform interface**.

In other words, one login to view all cameras everywhere. Safe and secure and no unauthorised access.

Typical daytime image set at medium resolution



This is an early morning car park view facing east at medium resolution



I live overseas so can I still buy Solar Cam & will it work?

In a word..absolutely! 3G/4G Solar Cam will function as intended worldwide provided you have a mobile phone service in the camera location. There is a small monthly or annual Cloud server fee for remote storage and access to the camera (same small cost worldwide) however, International customers will need to provide their own 3G/4G Data SIM card (voice is not necessary) with at least 1-2GB data allowance per month. This could be a pre paid or annual carrier plan but a SIM card is not something we can provide to international customers.

In order to save cost (and freight cost) the best option for international customers is to locally supply a 40W solar panel and 12V55A battery. A battery is heavy and a solar panel cumbersome so from a cost point of view it makes practical sense to at least provide those two items locally which are easy to purchase anywhere.

Contact us for specifications

Is there an option for Internal & External Recording?

As a major new in house system development we are very pleased to announce that our Pro Series 3G/4G Solar Camera (not the basic entry level) now supports **USB Flash drive recording**.

To put this into some sort of perspective, lets say you're camera is pole mounted on a large or small building site. We know there will be plenty of activity every weekday from 6.00am to 4.30pm. We also know the site is closed at night, all weekend and state by state public holidays.

With a 1TB (1000GB) USB Flash drive interfaced with the camera, the camera can record motion all day at 10 images (frames) per second at 2MP quality. However, as the motion activated recording is saved to the flash drive, its **not using 3G or server data**. A 1TB flash drive can store 5 million x 2MP JPEG pictures which is a huge recording capacity. When the flash drive is full it will auto over write or recycle recording and never requires formatting or deletion.

However, at night or during a scheduled recording mode, the system then ignores the flash drive and auto records any motion to our remote cloud servers. Users access our Cloud servers to replay night, weekend or public holiday motion activated events. Email or text alerts are connected to the scheduled recording mode and not during that day when the site is most active.

The advantage of flash drive recording means that users are not losing any site activity by day. It's still recording at high resolution and high speed but users have the ability to now **REMOTELY ACCESS** that flash drive directly from any PC, Mac or mobile phone. That's right, **flash drive recordings can be remotely played back**. Simply unbelievable and sensational technology.

This is tantamount to having a Network Video Recorder (NVR) on each and every camera site and all solar powered. **Try and do that with a security camera system and compare costs?**

What about a telephoto lens?

The latest "Enterprise" addition to our 3G/4G Solar Cam is the option of an 8 Megapixel Camera with a telephoto lens. Not be confused with a remote zoom lens or Pan Tilt camera, this system is designed for close up surveillance from more distant locations.

Clearly at 8 MP quality this camera will require more 3G and server data to compensate so it becomes necessary to slightly slow the recording speed. This means the camera can be perhaps mounted in a more secure or distant location. It is important to understand that the more telescopic the lens, the less field of view.

Both the Basic Entry and Pro series cameras have a fixed wide angle lens. Customers often ask what to expect in terms of camera width and field of view. The easiest way to explain what you are likely to see from a standard wide angle lens is tantamount to taking a site picture with an Iphone camera or similar. As we all know the image by default is quite wide but the quality of Iphone pictures is outstanding. The ability to zoom or enhance a picture is also quite easy and same with our 3G cam although having an 8MP camera and a vary focal or telephoto lens now takes this system to a whole new level.

The camera lens is fixed so it cannot pan or tilt (left right up down) in any direction other than zoom in and out both on the recording and live view.

If 240V or 12V power is available onsite can I use it?

Yes you can and this makes the process both easier and cheaper because then you don't need a solar panel, charger, battery and a few other hardware components. This also makes the entire system much smaller.

If you see Option 2 image below, note the CCTV housing fixed to the side of a pole. This is what you can expect. The camera and circuit board, 3G USB router, optional USB flash drive etc are all concealed within the one housing.

We will also provide a 12V 9A power supply and there is only one lead from the camera direct to your GPO power point via the supplied 12V power supply. No electricals are required simply connect to a power point and its done.

If you choose to add the 12V LED Flood light and/or speaker, no problem it will accommodate those options as well.

I have multiple sites so can I buy the camera only?

For those who require multiple camera systems, we have the ultimate cost effective solution for you. It's wise to initially purchase a full sample system ready built to become familiar with the camera and how it works and be familiar with the components.

Once again if you see Option 2 below, your system can look as pictured. We supply what we call a "bare bones" or sled. The sled consists of the 2MP bullet shaped camera (not much larger than a lipstick actually) and a small circuit board with 3 x USB ports.

The sled fits neatly into the CCTV housing. In terms of what you the customer prefer to supply, we will advise you or look at the sample system but basically you will need the following;

- 40W or larger Solar Panel
- 12V 55A rechargeable battery
- Solar Charger
- Battery case (as pictured or similar)
- Optional LED Motion flood light and or speaker

If we supply the bare bones and you are able to supply all other hardware components, the system is ready. It saves cost both in both hardware and freight and again ideal for all international orders.

What's the difference between the Basic & Pro Cameras?

Our Basic or Entry level system can be upgraded if desired (more cost to upgrade) but this system is 1 MP quality (still very good) smaller solar panel, smaller 20W LED Light, smaller battery and smaller charger. The camera case looks the same as depicted in Option 1 except it not powder coated as pictured.

The Entry Level system will not support a USB flash drive either unlike the Pro Version which supports all of the above albeit larger and more industrial hardware components. The cost difference is minimal but the basic system perhaps is more suited to farms and machinery, water troughs, gates etc whereas the Pro System is more suited to Construction sites, Mine sites, Councils, Energy companies, rail and transport etc. Talk to us about your needs so we can recommend the right system for you.

Solar Cam New All in one Option 1

Pictured below is our latest release all in one 2 Megapixel Solar Cam (or 8MP) system ready to mount and switch on. The battery, camera, circuits etc are securely housed in the one lockable metal enclosure for easy access and no exposed cables.

As an added deterrent, the blue and white Police like emblem is a visual warning that the premises may be monitored and not to be underestimated.

The LED motion activated flood light serves two purposes as well. Illuminating the area at night thus assisting the camera to record in high resolution colour, and a visual warning to any intruder which in many cases is all the deterrent you need. The intruder will be recorded, often he/she will look directly at the light/camera and a nice facial ID recorded.

The pictured optional speaker on the side of the metal enclosure will announce a pre recorded warning if motion is detected during a "scheduled recording mode" with words to the effect that "you are being recorded" or "Police have been alerted" etc. This system is Ideal for pole or wall mounting.



Solar Cam CCTV Housing Option 2

Pictured below is our 2 Megapixel Solar Cam system ready to mount and switch on. Once again the battery, camera, circuits etc are securely housed in the one lockable metal enclosure. Pictured is the motion activated LED Flood light, 40W Solar Panel, camera concealed within a typical outdoor and weatherproof CCTV housing whilst the battery and solar charger are contained within an IP rated outdoor lockbox.

Note that all components are fixed to an alloy 100mm square pole. We recommend the pole be approx 3.5 – 4m in height and dynabolted or cemented into the ground. Otherwise any sturdy structure is fine. The solar panel needs to face NE at about 30 degrees and not shaded at any time of possible. The solar panel cannot charge the battery when shaded.



Need more information

Tel 1300 763235

Hidden Camera Surveillance & Solar Cam

A Division of Forrestbridge Pty Ltd Est. 1982

PO Box 773

Ashmore City QLD 4214

Email: sales@solarcam.com.au

URL www.solarcam.com.au

URL www.hiddencamera.com.au